

COHATA № 1

Violino

I

Andante **5** Allegro molto

p

12 *p*

19 *cresc.*

25 *p*

32 *f* *tr*

38 *p* *cresc.* *sf* *cresc.*

46 *mp espressivo*

51 *pp*

58

63 *sul G*

69 *p cresc. poco a poco* *cresc.*

78 *f*

86 *p* *p* *cresc.*

91 *f*

97 sul G 2 3 pizz.

107 **Più mosso** pizz. *pp*

115 *cresc.*

122 *cresc.*

129 *dim.*

136 arco *p*

143

148 *mp*

153 *mf* *cresc.* *sub. p*

158

164 

171 

178 

184 

190 

196 

201 

207 

Andante 
con sord.

213 

224 

231 

Largo e grave

242 *mf* *f*

Musical staff starting at measure 242. It features a melodic line with various rhythmic values and accidentals. A dynamic marking of *mf* is at the beginning, and a crescendo leading to *f* is indicated by a hairpin symbol.

249 sul G

Musical staff starting at measure 249. It begins with a *sul G* marking. The tempo is *Largo e grave*. The staff shows a melodic line with some rests.

255 *tr* *tr* *dim.* *rit.*

Musical staff starting at measure 255. It includes trills (*tr*) and a decrescendo (*dim.*) leading to a ritardando (*rit.*). The staff ends with a fermata over a whole note.

II

Largo

2 *p*

Musical staff starting at measure 2. It begins with a double bar line and a fermata. A dynamic marking of *p* is present. The staff shows a melodic line with various rhythmic values.

8 *cresc.*

Musical staff starting at measure 8. It features a melodic line with various rhythmic values and accidentals. A crescendo (*cresc.*) is indicated by a hairpin symbol.

14 *p*

Musical staff starting at measure 14. It includes a triplet of eighth notes and a dynamic marking of *p*. The staff shows a melodic line with various rhythmic values.

20 *string.* *poco a poco string.* *cresc.* 3 3

Musical staff starting at measure 20. It includes a *string.* marking, a *poco a poco string.* marking, a crescendo (*cresc.*), and two triplet markings (3). The staff shows a melodic line with various rhythmic values.

31 *mf* *cresc.* *f* 3 *animando* 3

Musical staff starting at measure 31. It includes dynamic markings of *mf*, *cresc.*, and *f*, and two triplet markings (3). A *animando* marking is present. The staff shows a melodic line with various rhythmic values.

38 8 5 5 3 3

Musical staff starting at measure 38. It includes a fermata over a whole note, followed by a melodic line with various rhythmic values and accidentals. The staff ends with a fermata over a whole note.

42 string. *f*

47 pizz. arco pizz. arco *p* *ff*

51 string. *sf* *sf* *sf* **Largo** pizz. *pp*

57 arco *p calando*

III

Allegro molto

6 *f*

14 *f*

20 *p*

28 *f*

34

40 *tr*
vibrato

45 *p*

49 *p* *f* *p* *f*

51 *p* *f* *f*

54

60

66 *ff*

72 *tr* *pizz.* *f*

79 *arco* *p dolce*

86 *mf*

91 *mf*

96 *dim.* *pp*

100 *a tempo* *pp*

106 *cresc.* *mp* *cresc.*

112 *mf* *f*

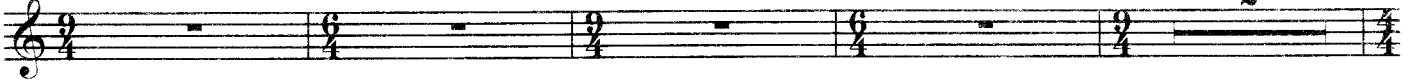
118 *f*

124

130

136 *tr* *sf*

143



Andante

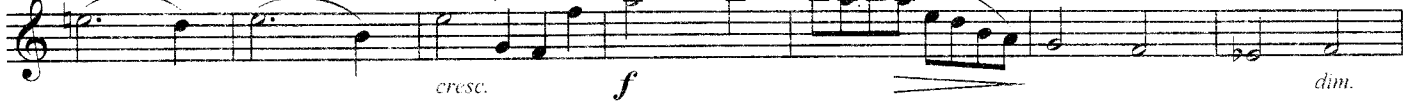
149



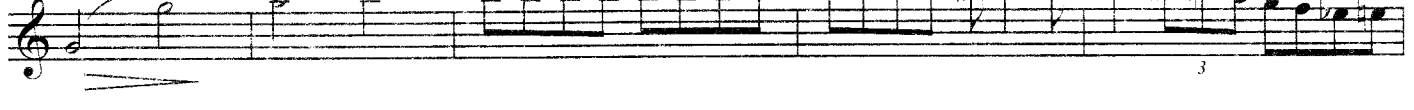
156



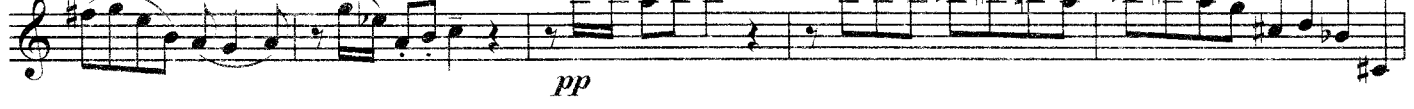
163



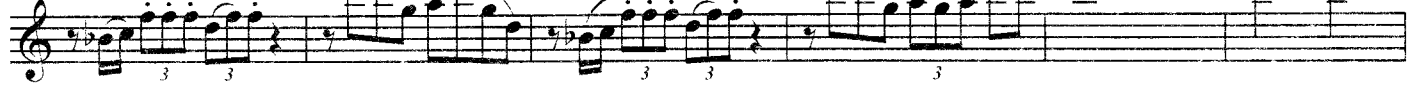
170



175



180



186

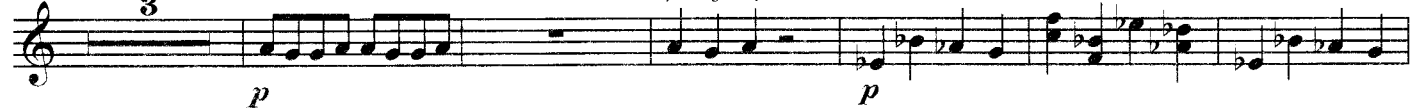


190



Allegro fantastico

196



205

212

Allegro molto con prestissimo

218

arco sul pont.

2

marcato

226

3

235

4

245

2

mf

cresc.

f

253

8

260

8

266

8

273

rit.

a tempo

fff

279

284

290

rit. **Andante molto**

ff

poco rit. **Tempo I**

295

dim. *ff*

СОНАТА № 2

1. Слово

Moderato con moto

5

9

13

più mosso

cresc. *f* *sf*